



Making Meaningful Connections

Networking with Healthcare Professionals to Increase Referrals

Amputee Coalition Volunteer Summit
March 10, 2021



Our Focus Today

1st The importance of **Allied Health Professionals**

2nd Patient-centered care

What is your role, as a Certified Peer Visitor (CPV) and/or Support Group Leader (SGL)?



Herb Kolodny

- Connecticut Amputee Network (CAN), Co-Founder
- Amputee Coalition Volunteer
 - Certified Peer Visitor (CPV)
 - Certified Peer Visitor Trainer
 - Lead Advocate
- Hospital Volunteer
- Speaker and writer advocating for rights of limb loss and limb difference community



Brenda Novak

- Connecticut Amputee Network (CAN), Co-Founder
- Amputee Coalition Volunteer
 - Certified Peer Visitor (CPV)
 - Certified Peer Visitor Trainer
 - Lead Advocate
- Hospital volunteer
- Active in local community and outdoor recreation (kayaking, surfing, skiing)



Together...We CAN

- **Established** in 2017
- **Mission:** Advocate for limb loss and limb difference community of CT
- **Website:** www.CTAmputeeNetwork.org
- Experts at living with limb loss: 20+ combined years of personal experience
- **You can do this too!**



Herb's Pivotal Moment

One week before amputation

- Monday:** Doctor confirms reoccurrence of cancer
PT says, "Good! You'll be better off."
- Tuesday:** 1st (and only) visit by Social Worker
- Wednesday:** **Social Worker calls back *Pivotal***
- Thursday:** Visit to Amputee Support Group Meeting
- Following Tuesday:** Amputation Surgery



The Big Take-Away

Believability that I would walk again and resume my normal life

“if they could do it, so could I”



8 Dimensions of Patient-Centered Care

1. Patients' preferences
2. **Information and education**
3. Access to care
4. **Emotional support**
5. Family and friends
6. Continuity and transition
7. Physical comfort
8. Coordination of care

Allied Health Professionals and support systems In Patient-Centered Care

- Doctors
- Nurses
- Prosthetists
- Physical Therapists
- Occupational Therapists
- Mental Health Professionals
- **Certified Peer Visitors**
- **Amputee Support Groups**



Healthcare professionals and you should know

3.6 million people will be **living with limb loss** by 2050

36% of people living with limb loss **experience depression**

Black Americans are up to **4x more likely** to have an amputation than white Americans



Healthcare professionals and you should know

85% of lower-limb amputations are **preceded by a foot ulcer**

Up to **55%** of persons with diabetes who have a lower extremity amputation will require **amputation of the second leg within 2-3 years**

Health insurance policy coverage

- CT insurance fairness
- AC working toward federal insurance fairness



LIMB LOSS IN THE U.S.A.

SUPPORT THE MISSION

The Amputee Coalition is the leading, national nonprofit organization working to support people with limb loss and limb difference.

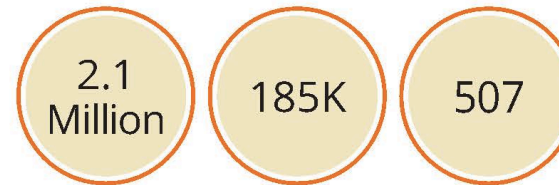
Our mission is to reach out to and empower people affected by limb loss and limb difference to achieve their full potential through education, support and advocacy, and to promote limb loss prevention.



LIMB LOSS AND LIMB DIFFERENCE MONTH

The Amputee Coalition has designated April as Limb Loss and Limb Difference Awareness Month to raise awareness about limb loss and limb difference. To learn more, go to amputee-coalition.org.

OVERVIEW



People living with limb loss in the U.S.

People have an amputation each year in the U.S.

People lose a limb each day in the U.S.



1,558 military personnel lost a limb as a result of the wars in Iraq and Afghanistan.



3.6 million people will be living with limb loss by 2050.



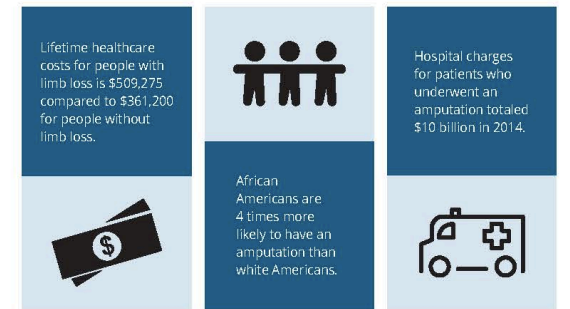
36% of people living with limb loss experience depression.



85% of lower-limb amputations are preceded by a foot ulcer.

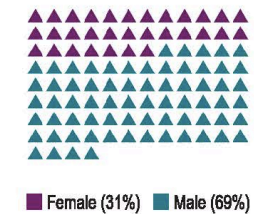
Source information can be found at <https://www.amputee-coalition.org/resources/limb-loss-statistics/>

FACTS

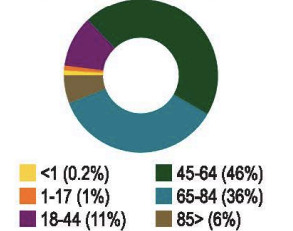


LIMB LOSS COMMUNITY INCIDENCE

Gender of Amputation Patients, 2014

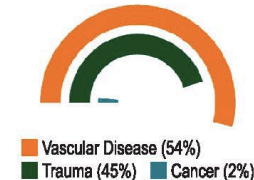


Age at Amputation, 2014

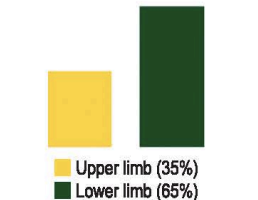


LIMB LOSS COMMUNITY PREVELANCE

Cause of Amputation



Types of Amputation



<https://www.amputee-coalition.org/resources/limb-loss-statistics/>



Emphasize the Power of Peer Support

- **Powerful** to meet an experienced amputee
- **Improves self-expectations**
- **Gets answers**
- **Helps family** to understand what to expect

Peer visitation is most effective when patient is ready



Places to Network: Who is POC? (Point Of Contact)

- Hospitals
- Rehab Centers
- Nursing Homes
- O & P Clinics
- Senior Centers
- Primary Care Physicians
- Support Groups
- Churches
- Community Health Centers
- Libraries



Know How to Request a Peer Visit

Peer Visits available for Patients and Family Members

- **Ask the patient's permission**
- Amputee Coalition Support App
- AC online request forms
- Email peersupport@amputee-coalition.org
- Phone: 888-267-5669 ext. 8124



Criteria for Amputee Coalition Certified Peer Visitors

- Certification: **volunteer training, background check, references, and Code of Ethics**
- **At least one year post-amputation**
- **CPV curriculums:**
 - Civilian
 - Youth & Family
 - Military
 - VA



Value of Amputee Support Groups

- **Interaction with peers**
 - Ask and answer questions
 - Serve as role model
- **Learn from experts**
 - Health and well being
 - Equipment and techniques
 - Adaptive sports and community events
- **Virtual group meetings available**

- **Information Sheets and research studies** available to view and download online
- **Peer Visitor** information
- **Connecticut Amputee Support Group** schedule and meeting locations


[HOME](#)
[NEWS](#)
[RESEARCH](#)
[CAN PUBLICATIONS](#)
[MEDIA](#)
[CONTACT](#)
[RESOURCES](#)

CTAmputeeNetwork.org



Founded By Amputees For Amputees

Connecticut Amputee Network welcomes you. As amputees ourselves, we know that people with limb loss/limb change share issues and concerns that need to be addressed. We created this organization, CAN, to join people with limb loss/limb change, their loved ones, caretakers, educators, and medical professionals to work



Connecticut Amput...

126 likes

Liked

Share

You and 7 other friends like this

- Connecticut Support Group schedules
- Private discussion group
- Links to news and information
- Action alerts for advocacy efforts

Connecticut Amputee Network

This is what your Page looks like to a visitor. [Switch back to your view](#) to manage this Page.

can

Connecticut Amputee Network
@CTamputeenetwork

Home
About
Events
Photos
Community
Groups
Reviews
Posts

Create a Page

Liked Following Share ...

Sign Up Send Message

Write a post...

Photo/Video Tag Friends Check in ...

No Rating Yet

Upcoming Events

www.facebook.com/CTamputeenetwork/

CAN: For Amputees By Amputees

©2019 CONNECTICUT AMPUTEE NETWORK



Thank You

Herb Kolodny
Brenda Novak



herb@CTAmputeeNetwork.org
brenda@CTAmputeeNetwork.org



<http://www.CTAmputeeNetwork.org>